

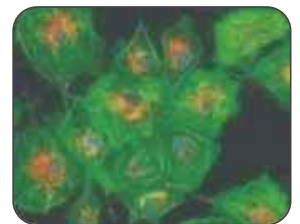
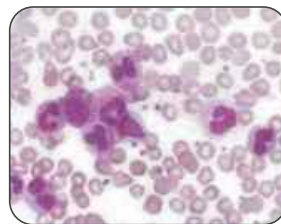


Advance Research Upright Microscope RXLr-5



Areas of research applications

- Pathology
- Microbiology
- Haematology
- Cytology
- Genetics
- FISH



Range of accessories

- Rackless stage
- Plan 20x & 60x objectives or any other on demand
- Plan darkfield objectives
- Object micrometer slide (10/100mm or 1/100mm)
- Pointer eyepiece, Micrometer eyepiece etc.
- Wooden case/styrofoam/thermocole packing
- Reflection mirror, darkfield filter
- Battery backup upto 12hrs
- Power Cable, C-Mount Adapter
- ND Filters & LBD Color Change filter (Ø45mm)
- IPD-Customized
- Stage Customized
- Drawing tube
- Camera Lucida
- Bio therm heating stage
- Set of Analyzer/Polarizer
- Dust Cover
- H 10x/15x/20x Eyepiece
- LED Display*
- Immersion Oil & Allen Keys

Advance Research Upright Microscope

RXLr-5

Technical Data



Body	Rugged, single die cast, sturdy, ergonomic design, interchangeable, anti-rust material, epoxy powder coated, non-hinged type with built in light & with light intensity regulator, heat treated, touch point treated, acid resistant texture painted, corrosion proof, acid proof, stain proof, illumination intensity controller & on/off switch, hinged door at bottom/push pull system at base for easy replacement of LED, handle/grip on the back, rubber feet, slot for Ana/Pol, extended base with hand rest, slot for filter.
Optical System	Universal plan infinite optical system, infinity corrected, anti-reflective coating, harmonic compensating, color corrected, anti-fungal, anti-mould, anti-bacterial coated, Anti-microbial treated, skin friendly material coated, with focal length 200, (multi-layered hard coated), colour coded objectives, vacuum coated Prism, flat image uniformly centered, parfocal (60mm), parcentered, suitable for BF, DF, PH, Pol etc.
Illumination	Fixed /Koehler 6V-20W/30W Halogen (life hrs 2000, Std.) OR Built-in uniform color 3W/5W (white) LED with life upto 1,00,000 hrs, intensity adjustable, flicker free illumination, colour temperature 4000K, on/off switch, with microprism filter (fly eye lens) for uniform illumination In entire FOV. Battery backup 2-12 Hrs*, Auto cut-off*.
Viewing Head	Binocular/Ergonomics Trinocular inclined at 25°/30°, swivelling siedentopf head, rotatable through 360°, IPD - 50-75mm, diopter adjustment on both eyepieces (±5mm), tube size 25mm, port for camera attachment, 2 position, splitting ratio 0:100, 100:0, upto 50mm adjustable viewing height, FOV upto 25mm.
Nosepiece*	Inward Tilted, Precise, Quadruple/Quintuple with Multiple Ball-Bearing, revolving (with an rubber/metallic ring grip) on multiple ball bearing, click stop mechanism, par-centered & parfocal. Inward tilted, Precise Quadruple/Quintuple revolving (with an rubber/metallic ring grip) on multiple ball bearing with light intensity memory function, LCD display on body for light intensity in percentage,color temperature, Color temprature correction knob & objective in use*
Eyepiece	Paired, Extra wide field WF10X with FOV. 20mm/22mm/25mm with diopter adjustment on one/both eyepieces (±5), Huygenian/ compensating type, anti-fungus coated, multilayered coated, high quality, good contrast, abrasion free, aplanatic, lockable, precentered, option for cross hair reticle/pointer.
Objectives	Infinity corrected Plan Achromatic/S-APO: 4x/0.12, 10x/0.3, 20x/0.5, 40x/0.75, (SL),100x/1.25 (Oil,SL)
Mechanical Stage	Double plate, rectangular right/left hand low drive control, co-axial movement knob, reckless mechanism*, horizontal, hard coating, double slide holder, stage size 140×150mm, X-Y movement 50-76mm on wire, precision 0.1mm vernier scale, with stainless steel holder, ball bearing mechanism with friction & jerk free movement.
Condenser*	Abbe condenser N.A. 1.25 swingout with aspheric lens (light relay) for brightfield, uniform illumination for entire FOV, separate movement on ball bearing guideways from focusing (rack & pinion), metal guide with iris diaphragm having center adjustable, Swingout filter holder, objective guide marking & focusable with slot for phase/dark field sliders.
Focussing	Both side, Co-axial on cross roller guide, Pre-focusing Lever & tension control with torque adjustment ring, coarse movement 30mm, upper limit stopper, high sensitivity focus drive with 0.20/0.25 mm per revolution, fine adjustment 2µm/2.5µm/Div, coarse-37.7mm per rotation, up 2mm/ down 13mm.
Power Supply	90V-240V/50Hz AC Integrated (SMPS based)/ Transformer
Phase Contrast*	Universal Turret (4/5/6 position) Condenser or slider (2/3 position)
Darkfield*	N.A 1.25(oil/dry) with iris diaphragm & filter slot
Polarizing*	Set of Analyzer & Polarizer
Fluorescence*	LED reflection illumination, single band filter with LED module,intensity knob, BF/FL switching Knob, mercury lamp illumination, 100W bulb
C-mount*	0.35X/0.5X/0.66X/1X Focusing for camera attachment
Controller*	Programmable input line controller upto 15 times with heat sink.

Key Features

- Infinite optical system
- 6V-30W/LED illumination
- Quintuple nosepiece
- S-APO Optical System*
- LED fluorescence*
- Microphotography*
- Built-in fly eye lens for uniform illumination to entire FOV.*
- Customized Stage Size* & X-Y Movement

As we are continuously improving & developing our products, our website may not be updated with advancement done However, we try our best to update the website for latest information's. for complete updated specifications, please do ask for latest brochure



Radical Scientific Equipments Pvt Ltd.

AMBALA CANTT 133104 (INDIA)

Ph.: +91-171-2977793, 3501111

Toll Free No: 1800-1233-229

email : info@radicalscientific.com

www.radicalindia.com